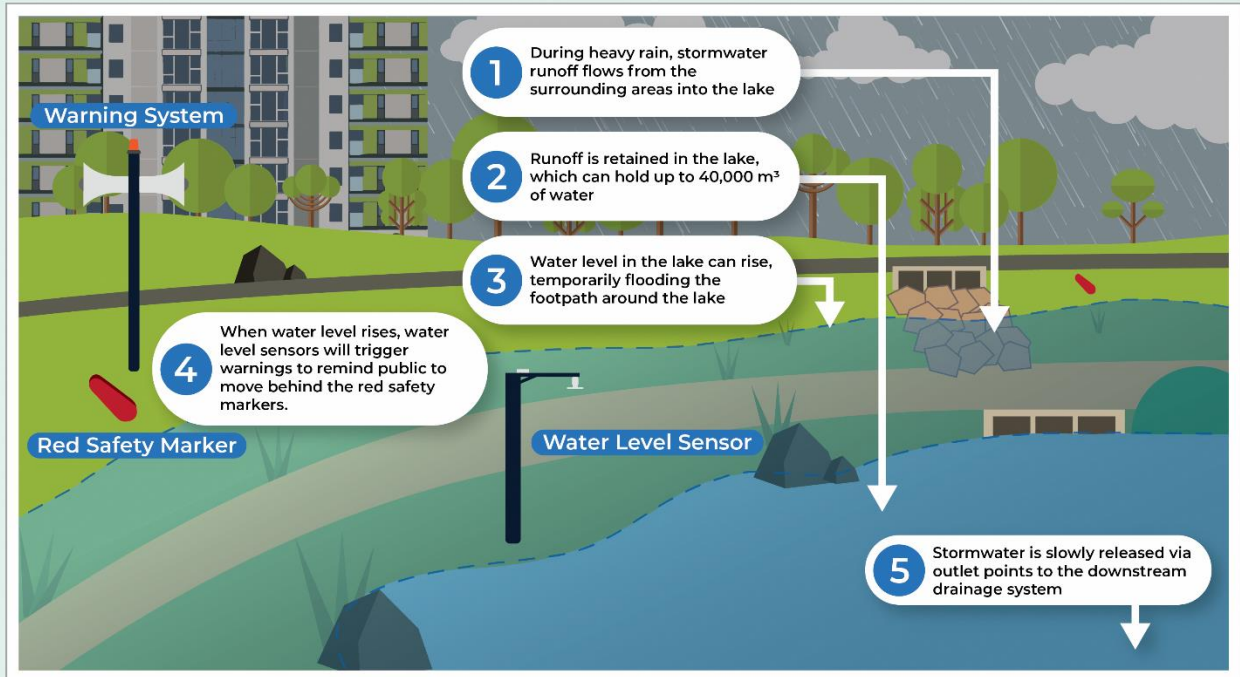


## Annex A

(Note: Diagram is not drawn to scale)

# How Alkaff Lake works as a retention pond

Climate change is expected to bring more frequent and intense rainfall, increasing the risk of flash floods. Alkaff Lake is a first-of-its-kind multi-functional drainage infrastructure for stormwater management. During heavy rain, stormwater is retained in the lake which has been designed to be transiently floodable. In dry weather, Alkaff Lake is a recreational space for the public.



## Annex B

### Signages placed around Alkaff Lake

# Retention Pond



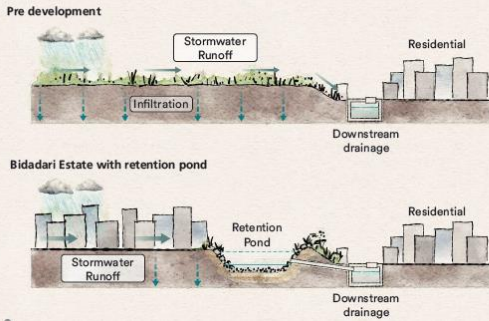
Integrated within Bidadari Park, Alkaff Lake is a first-of-its-kind multi-functional drainage infrastructure that serves as a retention pond for flood control. During a heavy storm, the lake temporarily holds stormwater runoff and regulates the flow to the downstream drainage system, thus enhancing flood protection in Bidadari estate and the surrounding areas. On dry days, the lake's banks provide recreational space that bring people closer to the water.

The lake can hold up to 40,000 cubic metres of water, the equivalent of 16 Olympic-sized swimming pools.

Alkaff Lake is a "pathway" solution under PUB's holistic "Source-Pathway-Receptor" approach to manage stormwater, which introduces adaptability and flexibility to Singapore's drainage system.



Scan to learn more about PUB's "Source-Pathway-Receptor" approach.



## FOR YOUR SAFETY UNTUK KESELAMATAN ANDA

## 为了您的安全 உங்கள் பாதுகாப்பிற்காக

Move away from the lake and do not go beyond the **RED** markers when the warning lights and announcements are activated. Water level in the lake is rising rapidly.

当警告灯和公告启动时，请勿靠近湖边，也不要越过红色标记。水位正在迅速上升。

Beredar dari kawasan tasik dan jangan melepasi penanda **MERAH** apabila lampu amaran dan pengumuman diaktifkan. Paras air sedang meningkat dengan cepat.

எச்சரிக்கை விளக்குகள் மற்றும் அறிவிப்புகள் செயல்படக்கூடிய போது ஏரியில் நழுவை வணேட்டாம். மற்றும், சிவப்பு அடையாளக் குறியீட்டை அப்பால் செல்ல வணேட்டாம்.



In case of emergency, please call **995**  
Jika berlaku kecemasan, sila hubungi **995**

如有紧急情况，请拨电 **995**  
அவசரநிலை ஏற்பட்டால், **995**க்கு அழைக்கவும்

## Annex C

(Note: Diagram is not drawn to scale)

# Key Features of Alkaff Lake



### LEGEND

Main Footpath	Swales	Warning System
Floodable Footpath	Terraced Wetlands	Water Level Sensor
Shelter	Gross Pollutant Trap (GPT)	Life Buoy
Viewing Deck	Aerator	Outlet Point